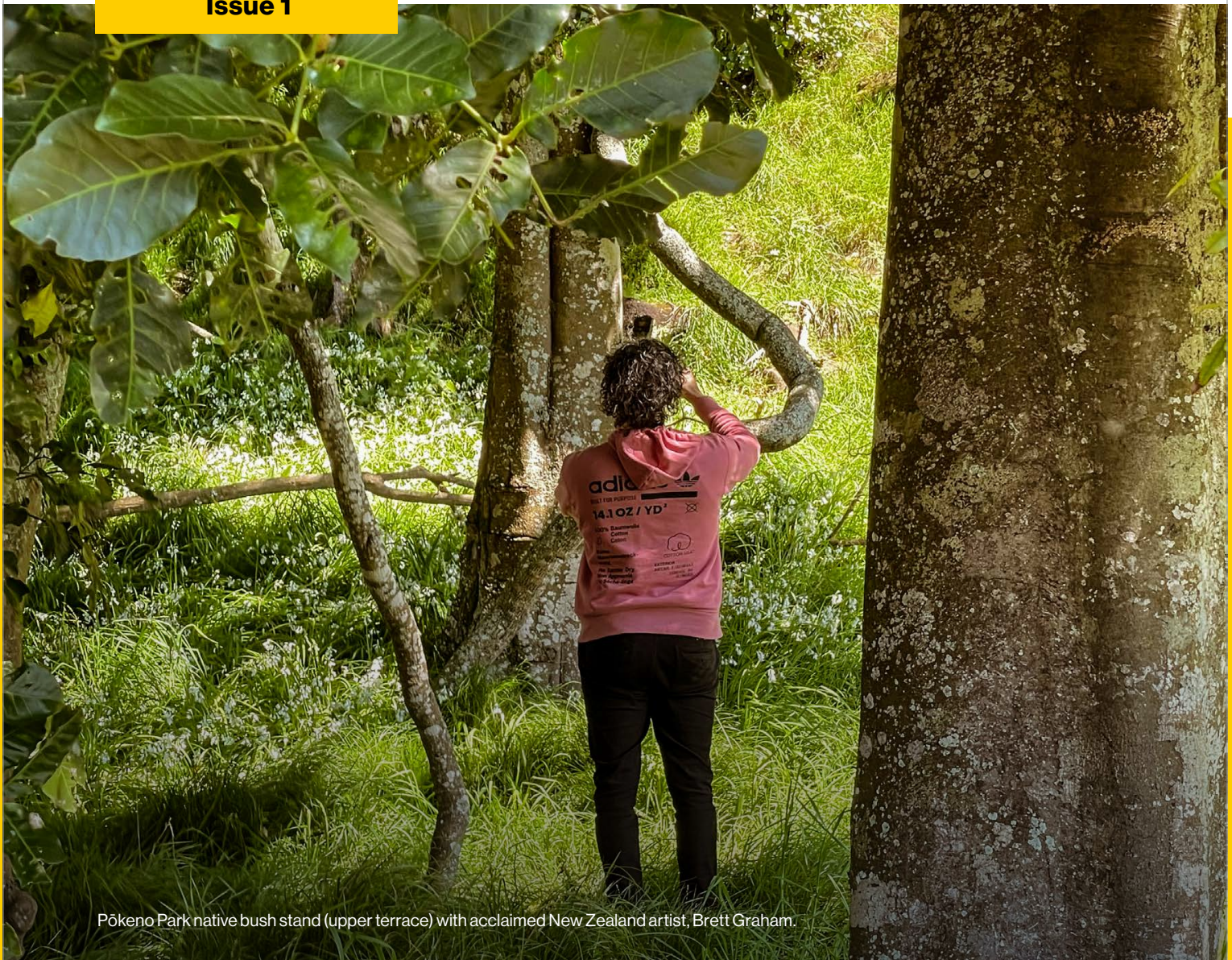


Hynds Foundation

Impact Report

2021/2022

Issue 1



Pōkeno Park native bush stand (upper terrace) with acclaimed New Zealand artist, Brett Graham.

The Hynds Group of Companies is proudly New Zealand and family owned. Our reputation has been built on strong relationships, innovation, and the importance of long-term partnerships to drive positive impact. The Hynds Foundation is the charitable trust, acting on behalf of Hynds.

**Scape
Public Art**
page 12



**Auckland
City Mission**
page 14



**Pōkeno Park
Ecological Reserve**
page 18



**Manurewa
High School
Business Academy**
page 8

Contents

01 Hynds Foundation

Who We Are	4
What We Do	4
Our 5 Action Pillars for Funding and Investment	5
Our Funding Approach	5

02 Grants and Donations Review

Education	6
Health & Health Research	10
Arts & Culture	12
Community Well-Being	14
Environmental	16

03 Pōkeno Park Ecological Reserve Project

Project Overview	18
Stage 1: Commence Initial Land Design and Development	20
Stage 2: Ecological Restoration Project	21
Stage 3 – Visitor Centre, Sculpture Trail and Industrial Extension Land Development	21

04 Financial Overview 2021/2022

22



Hynds Foundation Trustees: Mami and Aaron Hynds, Léonie and John Hynds (Chairman), Robyn and Adrian Hynds.

Who We Are

The Hynds Foundation Charitable Trust was established in 2017 as a community funding extension of the business enterprise. People and community are at the heart of the Hynds Foundation.

Our vision is a thriving New Zealand, where the well-being of our people and communities is paramount, inequality is minimised, and opportunity to innovate with positive impact is universally accessible. We want to ensure, a bright future is not just a hope, but a reality.

What We Do

With a spirit of generosity and positivity, Hynds Foundation’s mission is to connect with and invest in people and communities in a collaborative way. We support ambitious developments, help to meet fundamental needs, and contribute to a thriving future for individuals, whānau, and the wider communities of Aotearoa, New Zealand.

Through various philanthropic endeavours, we resource new and existing initiatives that improve the wellbeing and future outcomes of local communities.

We are achieving this through:

- Financial contributions.
- Providing access to expertise and opportunities within the wider Hynds Group.
- Forging strong partnerships with schools, community groups, government and business organisations – particularly with those we hold a personal association with.

These contributions seek to enable individuals and communities alike to experience more, learn more, and aim higher.

Our 5 Action Pillars for Funding and Investment

We are driven by the desire to see greater social, cultural, environmental, and economic development in New Zealand.

We aspire to help build thriving communities and galvanise sustainable advancements in the overall well-being of New Zealanders and our natural world, by supporting and presenting opportunities for people and projects across 5 key sectors:

Education: Assisting the expansion of secondary and tertiary education opportunities, to foster our country’s next generation of innovators.

Health and Health Research: Financial support of research and innovative solutions primarily for the benefit of our nation’s population.

Arts & Culture: Promotion and support of arts and culture initiatives, to help build a self-sustaining arts sector that celebrates, inspires and illuminates New Zealand’s diverse culture.

Community Well-being: Contributing to improvements in equity, support, resources and outcomes for individuals, families and communities.

Environmental: Engaging in practical initiatives that seek to provide education, restoration and protection of our natural world, and the minimisation of negative environmental impacts.

Our Funding Approach

Eligibility and Allocation of Funding

Eligibility for grants is determined by:

- The alignment with Hynds Foundation’s purpose and objectives.
- The merits and benefits that current and proposed activities contribute to our objectives within the allocated budget of our five funding categories.
- Traditionally focused on South Auckland initiatives, the Foundation’s grants and funding allocations are now being expanded to regional programs throughout New Zealand, instigated and driven by our business division team members.

Annual Funding Plan

- Hynds Foundation funding is determined by Hynds Holdings Limited’s annual dividends policy and from a contribution by assets held in Hynds Foundation’s name. An annual grant plan for the allocation of funds is established each consecutive year by the Board of Trustees.



02 Grants and Donations Review

→ Education

University of Auckland Centre for Innovation and Entrepreneurship

– **Unleash Space**
Hynds Foundation is working with the University of Auckland’s Centre for Innovation and Entrepreneurship to develop ways to evolve tertiary education and unleash the entrepreneurial potential of our young people.

A significant project in championing the next generation of innovators, has been the launch of the Unleash Space, of which The Hynds Foundation is a founding partner. The space is a vibrant innovation and entrepreneurship hub, with a state-of-the-art Create and Maker Space that will help grow ideas into ventures. Beyond the space and leading-edge equipment on offer, the Unleash Space houses staff who offer wrap-around support and provide experiential programmes and events. The new hub reflects the University’s commitment to developing business-savvy, entrepreneurially-minded graduates to ensure New Zealand’s longer-term economic prosperity. We are proud to help grow the entrepreneurial spirit of young people through the Unleash Space and our contribution has been instrumental in creating a place where students can design and create anything they can imagine.



– **Hynds Entrepreneurial Fellows Programme**

Hynds Entrepreneurial Fellows Programme was established to embed innovation and entrepreneurship into the curricula across the University of Auckland, by working with and supporting academics from all faculties and disciplines. Peter Rachor, an appointed Hynds Entrepreneurial Fellow, brings a wealth of diverse experience to the role as a former senior executive and an entrepreneur in his own right, with experience in mobile, web and biomedical technologies.

Peter is playing a vital role in cultivating the entrepreneurial potential of University of Auckland students. The programme of work aims to develop the entrepreneurial mindset and capability of students and facilitate their engagement with New Zealand’s entrepreneurial ecosystem.



Peter Rachor, Hynds Entrepreneurial Teaching Fellow (Hynds Paewai Whakaako Ngaio) at the University of Auckland.

“Our gratitude goes to the Hynds family for enabling this fellowship to happen. The Hynds Group is proudly New Zealand owned and has built its reputation on innovation. Their recognition of the importance of ensuring our country’s next generation of innovators is something we share.”

Wendy Kerr, Director of the Centre for Innovation and Entrepreneurship.

Education Additional Support

- **Auckland Foundation**
- **Hynds Education Fund**
- **Endowment Fund**
- **Buddy Bench**
- **Jellybean Theory**
- **Student Coaching**
- **Tread Lightly Charitable Trust, Drain Game**

Manurewa High School

Manurewa High is the largest multicultural school in New Zealand, with 2100 students representing over 50 nationalities.

Hynds Foundation has had a strong affiliation with Manurewa High School (MHS) for over 10 years, and John and Léonie Hynds for much longer, having met at the school while they were young students. Our connection with the school has a special significance.

As the largest decile one school in New Zealand, we are proud to 'give back' and contribute to the established programmes and new initiatives emerging from the school in a variety of ways.

The three key initiatives at MHS that we support are the 'Business Academy' which John Hynds co-founded and is Chairman of, the 'Pathway to Employment' programme, and the Hynds Foundation Engineering Scholarships. Additionally, as a Foundation we offer some support to Manurewa Intermediate - a feeder school to Manurewa High School.

The school has had such positive feedback on the initiatives, it has encouraged the Hynds Foundation to instigate the process of scaling what we've built into other schools and regions.

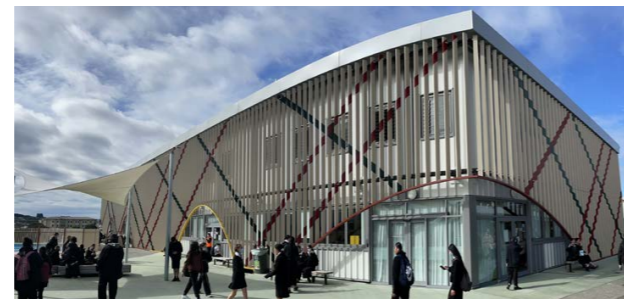
The new building for Manurewa High School Business Academy

The Business Academy

The initial goal of the academy was to encourage students to become creative, enterprising and entrepreneurial people, but it has become so much more and spans extensive entrepreneurial and employment programmes.

The Business Academy Board, of which John Hynds is the Chairman, has forged partnerships with community, government and business organisations, to create opportunities for students to experience more, learn more, and aim higher.

In addition to offering personal development including mentoring and work experience, career pathways and business education such as 'Young Enterprise', the Manurewa High School Business Academy has created a learning hub known as Makerspace. Not only are the students able to explore ideas and use materials and equipment to be creative and productive, but they are exposed to new experiences, opportunities and relationships that they may not otherwise encounter.



Manurewa High School Young Enterprise Students

Pathway to Employment

A partnership between Hygrade Water and Manurewa High School is giving MHS students real-life experience in the workplace, and helping pave the way for their future careers.

Manurewa High School Business Academy has designed a programme to enable a pathway to employment for students completing their last year of school.

It is primarily designed for students who are not on a university trajectory, but allows them to complete Level 3 NCEA, and keep their options open for future career options. The goal is to provide students with an opportunity to gain an understanding of what it's like to work in a high-performing New Zealand business, and ultimately giving them greater confidence about taking their next step.

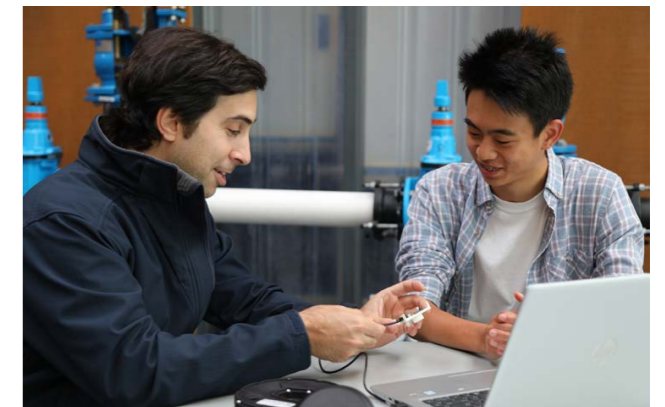
The programme, which encompasses learning at school three days per week, and engaging in work experience the remaining two days, also provides students with a developing CV that can enable a pathway directly to successful employment.

Hynds Foundation Engineering Scholarships Programme

John and Léonie Hynds initiated annual University of Auckland scholarships for Manurewa High School Students in 2012, through the First Foundation.

Following the formal establishment of the Hynds Foundation in 2017, we took over the facilitation and co-ordination of the scholarships and established our own Scholarship Programme with support from the wider Hynds team.

Each year, the Hynds Foundation awards scholarships specifically for the Bachelor of Engineering (Hons) degree at University of Auckland, concentrating our efforts on a definitive pathway, that enables us to provide the best support we can.



In collaboration with Manurewa High School, University of Auckland, the Hynds business, and our customers and suppliers, we are able to support and equip students, with financial assistance for tuition fees, valuable work experience, the opportunity to familiarise themselves with the business environment and make advantageous connections with others in the field.

A valuable part of our Scholarship Programme are the engineers we enlist from within the business to mentor the students. The guidance, support, and experiences shared, are invaluable to MHS students – some of whom may be the first in their family to attend university.

The Hynds Foundation is proud to be associated with these hard-working young people and we are excited to see where their journeys take them.

A valuable part of our Scholarship Programme are the engineers we enlist from within the business to mentor the students.

Health & Health Research

Heart Foundation

Since 2013, Hynds Foundation has regularly supported Heart Foundation NZ through a number of research grants and funding initiatives.

We have also been encouraged by the keen participation of our team, customers, and suppliers in the Tour of New Zealand cycle event, raising an impressive amount of additional funds for Heart Foundation since the inaugural event in 2012

The Foundation has supported research instigated by Dr Roy Hoerara, who has conducted research nationally for Maori Cardiovascular Health.

Thanks to Hynds Foundation funding, Dr Katrina Poppe has also been able to pursue various cardiovascular research projects. Based at the University of Auckland, Katrina is on the leadership team of the Vascular Informatics using Epidemiology and the Web (VIEW) cardiovascular research programme, and also works with Heart Foundation Chair of Heart Health, Professor Rob Doughty.

Katrina's research examines how we effectively utilise the wealth of health information available to improve risk prediction for individuals. Katrina has developed a New Zealand-based risk assessment tool for individuals with heart conditions and she is currently investigating whether useful information can be obtained from repeat healthcare visits, and in the patterns of how heart medications are used.

Katrina is also leading studies that aim to improve the detection of atrial fibrillation (AF), and underlying heart conditions in people with AF. These projects will directly benefit study participants but will also provide new, more accurate risk assessment for all New Zealanders with heart conditions, particularly our young people and those at high risk.

Auckland BioEngineering Institute (UoA) – Atrial Fibrillation Research

Hynds Foundation is now supporting Dr Jesse Ashton, and his research to improve both diagnosis and treatment in costly cardiac diseases such as AF and heart failure.

Jesse plays a leading role in the collaboration between world-leading research institute ABI and the University's School of Medicine, working at the interface of cardiology and the nervous system, and using engineering, physiology and advanced imaging techniques to better understand the cardiac system.

Jesse and his research team are working to improve our understanding of AF using image-based computer models, experimental studies and a novel high-throughput microscope system. And in the first study of its kind, the team is examining whether focused stimulation in the brain could activate a targeted subset of the nerve fibres contained in compound cardiac nerves, as a potential alternative treatment for AF and cardiac diseases.



Heart Foundation: (From left to right) Associate Professor Gerry Devlin (Medical Director of the Heart Foundation), Robyn Hynds, Dr Katrina Poppe, John Hynds and Professor Rob Doughty.



Auckland BioEngineering Institute:
Dr Jesse Ashton

Katrina's research examines how we effectively utilise the wealth of health information available to improve risk prediction for individuals.

Heart Foundation:
Dr Katrina Poppe

Heart Foundation Commitment



→ Arts & Culture

Pōkeno Ecological Reserve and Sculpture Park – Pōkeno Sculpture Commission

Hynds Foundation is proud to be spearheading the development of the Pōkeno Sculpture Park, as part of the extensive Pōkeno Park project.

The sculpture park will feature commissioned sculptures by established and emerging artists along a dedicated trail through the park grounds. As an extension of this, there will be regular opportunities for artists to run workshops and education programmes to showcase their art practices. John and Léonie Hynds have visited numerous sculpture parks across New Zealand and internationally, gaining insight and inspiration for the development of the greatly anticipated Pōkeno Sculpture Park.

Tōtara Carvings by Leigh Chrisensen



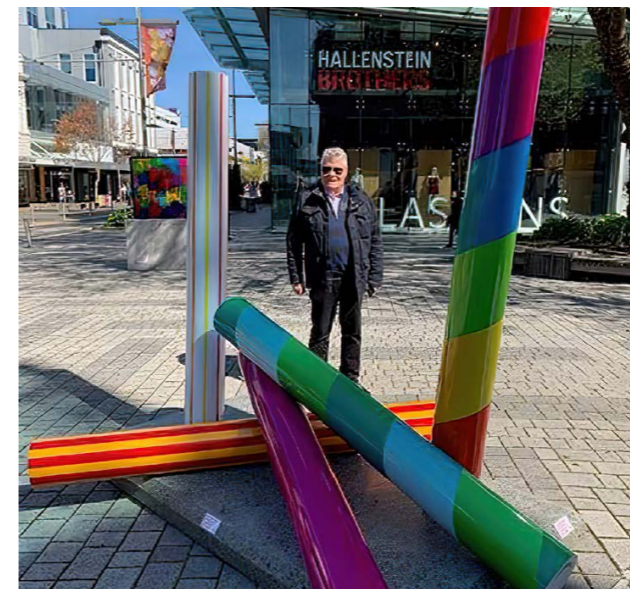
SCAPE Public Art – Ōtautahi Christchurch

Hynds Foundation has proudly supported SCAPE Public Art in Ōtautahi Christchurch, through both financial sponsorships and the provision of materials and manufactured items for the production of artists' works.

Since 1998, SCAPE has installed free-to-view contemporary public art in Central Christchurch all-year-round, engaging the community through exciting work that is celebrated around Aotearoa and the world.

Held in the central city and supported through a range of partnerships, the SCAPE Seasons showcase leading national and international contemporary artists, and provide a springboard for emerging local talent. Works in the Seasons are created as a result of close collaboration between art and business, a unique and highly regarded model worldwide.

Hundertwasser Art Museum (Whangarae)



**Arts & Culture
Additional Support**

- **Artist Grants:** Fostering the growth of New Zealand art and supporting young and emerging artists has long been a passion for John and Léonie Hynds. Hynds Foundation supports individual artists to develop their practices through the Arts Foundation and Boosted – the country's only crowdfunding platform dedicated to helping get homegrown art off the ground.
- **Auckland Art Gallery:** Support to enable annual exhibitions and various acquisitions.
- **Artspace Aotearoa:** Supporting emerging artists to exhibit their work.
- **Objectspace:** Contributing to a public gallery dedicated to positioning craft, design and architecture within a range of cultural, economic and social frameworks, to provoke new assessments about work and practices.
- **Te Tuhi Contemporary Art Gallery:** Supporting artist initiatives and learning experiences.
- **Someday Stories Film Initiative**
- **Bridget Hachett Partnership**
- **Hundertwasser Art Museum (Whangarae)**

Community Well-Being

Auckland City Mission, HomeGround Project

Hynds Foundation is proud to have made a significant donation to and become a part of Auckland City Mission’s revolutionary new development, ‘HomeGround’, which will provide much needed accommodation, medical and community facilities for Auckland’s homeless.

Over the next 50 years, 80 apartments will enable people to exit street-living immediately, using a New Zealand-first model of housing (providing a home for a total exceeding 4000 people!) The new Mission will offer the ONLY publicly funded community detox beds in Auckland, with a total of 25 beds. (That’s 32,500 detox placements over 50 years!)

HomeGround will offer fit for purpose spaces, implementing an improved trauma-informed model of care, to provide health and social services via the Calder Medical Centre; dental clinic, pharmacy, crisis care, housing first and outreach teams within the facility.

Retail and community spaces will also be available for therapeutic interventions, including social enterprise initiatives and conference and event facilities that will be accessible to all Aucklanders. A truly transformative project that we are proud to support!



Auckland City Mission

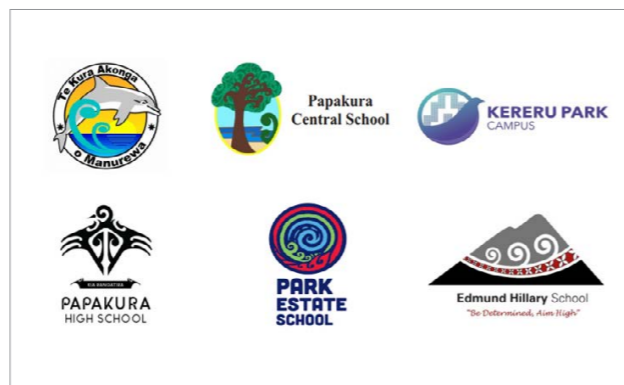
Kootuitui Ki Papakura Trust

Hynds Foundation have been supporters of Kootuitui Trust since 2020.

Based in Papakura, Kootuitui Ki Papakura, comprises a cluster of five primary schools and Papakura High School - but their influence reaches well beyond the students and families of these schools. The Kootuitui approach - “by whānau, for whānau, with whānau”, is implemented by a three-strand system, and aims to improve outcomes in education, health and homes.

The education strand focuses on digital equity, and as part of the initiative parents are able to purchase chromebooks. The health strand allows for additional nurses and support workers within schools.

The home strand concentrates on the accessibility of information and support in digital skills, financial literacy and addressing simple solutions for dry, healthy homes.



Kootuitui Participants Schools within Papakura region



Kootuitui team

Piha Surf Club

The United North Piha Lifeguard Service has been keeping swimmers safe on the wild Auckland west coast beach for more than 70 years.

Thanks to funding and materials from Hynds Foundation, the Club has boosted its patrol capabilities with a new, state-of-the-art patrol tower.

The previous lifeguard tower, which had been in place since 1976, had become unsafe and didn’t provide lifeguards a clear view of the beach. The new eight-metre tall cylindrically shaped concrete tower – named Te Pae – is designed to give unobstructed views across the beach.

The tower features nine custom segments as the main body of the structure, with the segments customised from Hynds 2100mm pipes and 4000mm risers.

Hynds Precast Development Manager Mark Ballard was involved with the project from its inception. “The tower combines some great engineering and design elements, and the colour matches the dark West Coast sand for added aesthetic while also reducing light reflection.”

Coming from a precast background, this project has been particularly unique for Mark. “It’s always great to see Hynds’ products being put to different uses and I’ve enjoyed being a part of this. This project has been quite unlike any other.”



As well as greatly improving the safety and patrol capabilities, the structure is also designed to fit perfectly with its surroundings

Community Well-being Additional Support

- Lifeline
- World Vision Afghanistan
- World Vision Ukraine
- Various Community Initiatives
- Hynds Regions – Community Projects

→ Environmental

Building a Sustainable Future

We are a proud Kiwi company with a passion for Aotearoa. Protecting New Zealand’s waterways, environment and communities is at the heart of everything Hynds does.

Hynds has adopted a sustainability framework which focuses on three strategic pillars; the planet (our natural environment), people (our people but also our wider communities and stakeholders) and products (innovating and building resilience into what we do to meet the needs of future generations).

Our Sustainability Framework helps guide our efforts in tackling some of New Zealand’s and the world’s most complex challenges like the effects of climate change and scarcity of resources.

Pōkeno Ecological Reserve and Sculpture Park

As part of the extensive development we have committed to in Pōkeno, we are cultivating an ecological reserve that will restore and protect the natural environment encouraging an ever diversifying ecosystem of native flora and fauna.

We have already undertaken significant planting of over 40,000 native shrubs, grasses and trees as part of our mission to regenerate the native flora of the land. and to encourage the reintroduction and diversity of native birds and freshwater ecosystems – and this is just the beginning!



View looking north from second peak.



New planting underway in ridge section.



Native planting from two years ago has taken hold in the upper catchment.

Environment
Additional Support

→ **Otara Waterways & Lakes Trust:** “When the lakes, waterways and wildlife flourish, the people flourish”

The Ōtara Waterways and Lakes Trust has a long term vision to restore the mauri of the Ōtara waterways and reconnect people to their local creeks and streams.

→ **Sustainable Coastlines:** Dedicated to educating and enabling Kiwis to care for our country’s coastlines and waterways including tree planting and coastal clean-ups

03

The Pōkeno Park Ecological Reserve and Sculpture Park

The Pōkeno Park Ecological Reserve and Sculpture Park is an investment made by the Hynds Foundation to extend and support our charitable work across the environmental, educational and arts & culture sectors.

Hynds Foundation purchased land holdings at 62 and 10 Bluff Road, Pōkeno. This was a multifaceted investment that will provide income for the Foundation through the leasing of industrial extension land. However, most importantly, we are transforming prior farmland into an ecological reserve, sculpture park, and educational and tourist site. This development has New Zealand's future generations and the restoration and preservation of our natural world at its core.

This development has New Zealand's future generations and the restoration and preservation of our natural world at its core

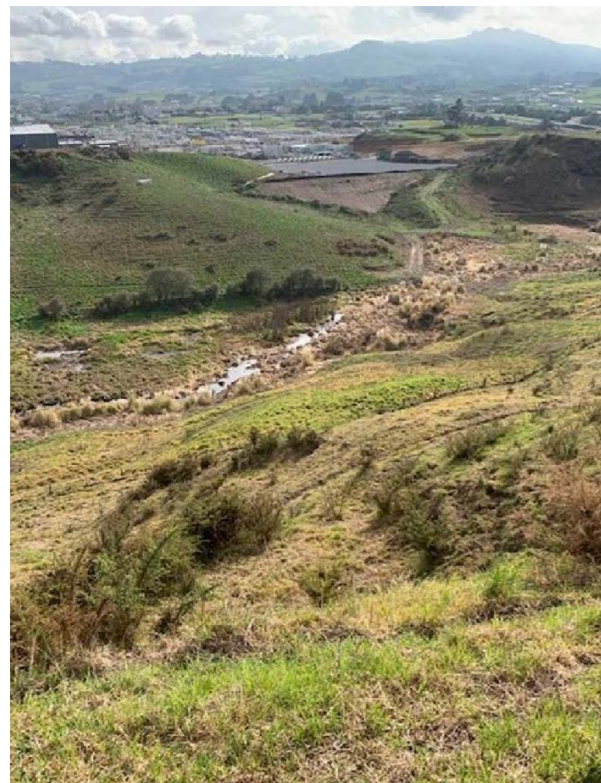
The park design and development has commenced and will include:

- A labyrinth of walking tracks through native wetlands, native bush, cascading streams and ponds.
- A sculpture trail featuring established and emerging New Zealand artists.
- An education zone to inspire and engage with schools, universities and local community groups.
- Artist studios and residence capabilities to support New Zealand's burgeoning art community.
- A native plants nursery to aid in the restoration of the natural environment and an ever diversifying ecosystem of native flora and fauna.
- Various initiatives to showcase the history and purpose of the park and its programmes.



Project Overview

The Pōkeno Park Ecological Reserve and Sculpture Park development comprises three stages that are inherently linked. The Hynds expansion land project will help fund the visitor centre and sculpture park. Equally the sculpture park is connected to the ecological restoration works as it helps form the framework for the trails and native reserve.



Stage 1

Ecology and Land Design Planning

- Planning for ecological and civil engineering outcomes with experts to provide advice on how best to develop the quarry land site.
- An expansion of the existing Hynds operation onto the lower portion of the sites at 62 Bluff Road (land adjoining SH1) and strengthening and re-compaction of the 10 Bluff Road site.
- Design and interface between heavy industry to the north and native park to the south.
- Improve track access for park maintenance
- Commence native wetland planting and native shrub planting in the upper gully (Over 40,000 native plants have already been planted throughout the Park.)
- Engage local Iwi and Councils to design and develop the park land and wetland surfaces in a way that will support the restoration of native bush and freshwater ecosystems.



Stage 2

Ecological Restoration Project

- Continuation of native shrub planting and the establishment of an onsite nursery to cultivate native wetland and bush variety plants for the revegetation project.
- The Park waterways will be designed to restore the habitats of native species through improved aquatic environments and connectivity for native fish species, the introduction of native wetlands, and better erosion and flood management.
- Reduce the harm of predator and exotic pests (stoats, ferrets, rats, rabbits) through removal and control methods.

Stage 3

Visitor Centre, Sculpture Trail and Industrial Extension Land Development

- The Visitor Centre will include an 'Artist in Residence' capability, education zone for school and educational tours and amenities to accommodate day-long visits to the park.
- The Sculpture Trail will pass through the native plant nursery and weave its way through all of the Park land, and feature works by established and upcoming New Zealand artists.
- We will construct a new lower level wetland and water flow area.
- Preparation to build and lease remaining undeveloped land for future Hynds Foundation income.

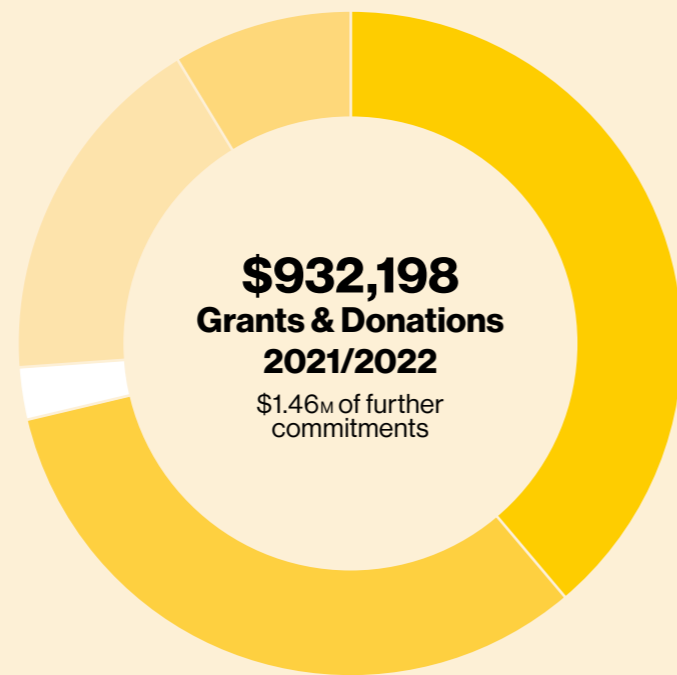
04

Financial Overview 2021/2022

Past Year Grants and Donations (2021/2022)

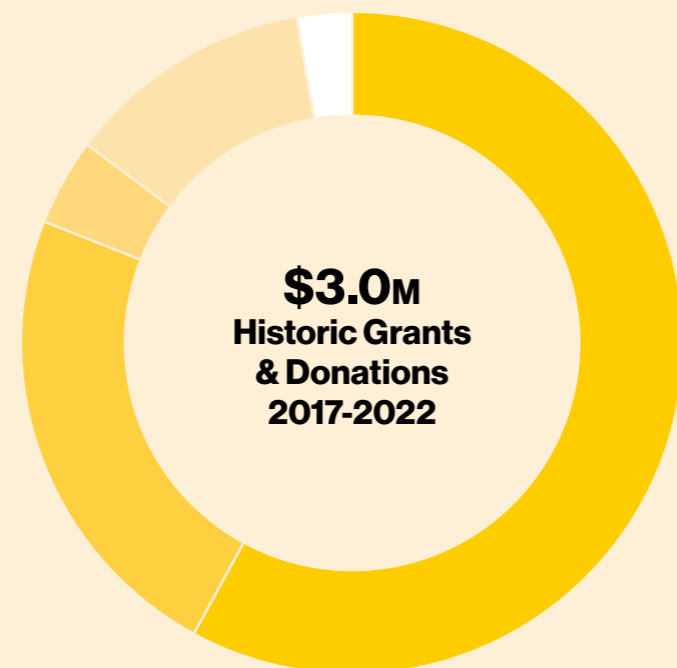
- Education
- Health
- Arts & Culture
- Community & Wellbeing
- Environmental

Note: Environmental charitable giving commenced 2022.



Historic Grants & Donations (2017-2022)

- Education
- Health
- Arts & Culture
- Community & Wellbeing
- Environmental



Hynds Foundation

Level 4
9a Hargreaves Street
Freemans Bay
Auckland 1011
New Zealand

+64 9 361 5590

www.hyndsgroup.co.nz

Charity Registration Number: CC50547